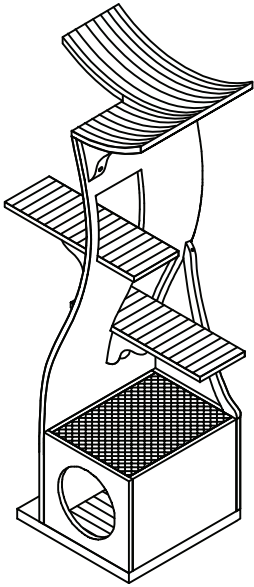
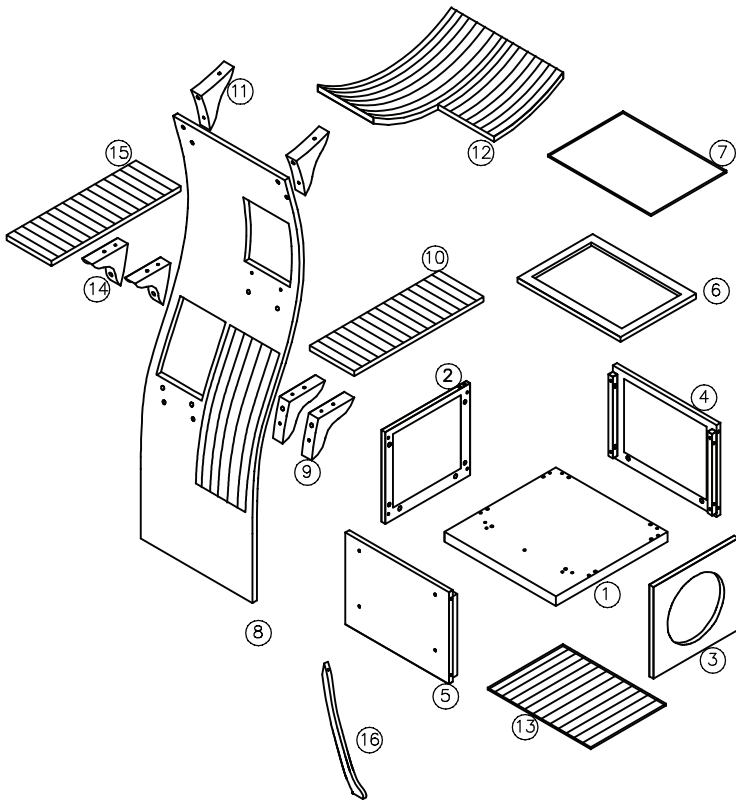


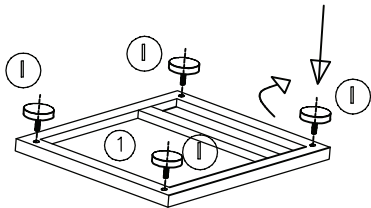
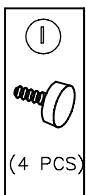
LOTUS ASSEMBLY INSTRUCTIONS



(A)		16 PCS
(B)		1 PCS
(C)		9 PCS
(D)		9 PCS
(E)		13 PCS
(F)		29 PCS
(G)		31 PCS
(H)		2 PCS
(I)		4 PCS



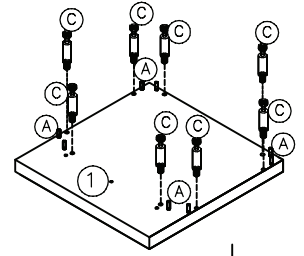
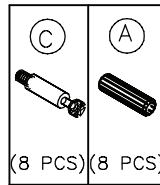
STEP 1:



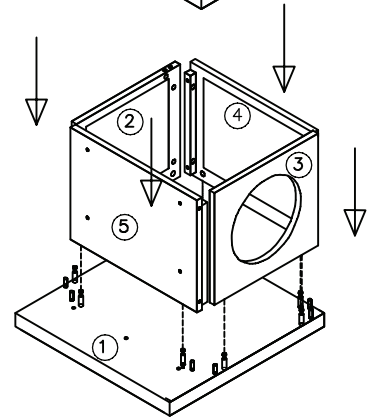
Bottom levelers are optional.
Use on uneven floors for stability.

Ver 12

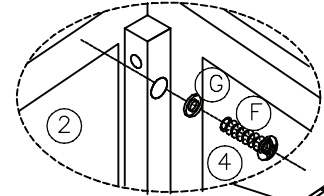
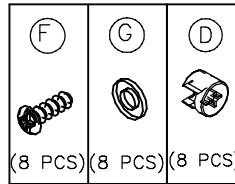
STEP 2:



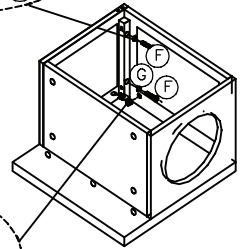
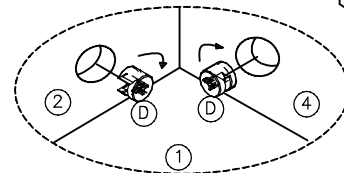
STEP 3:



STEP 4:

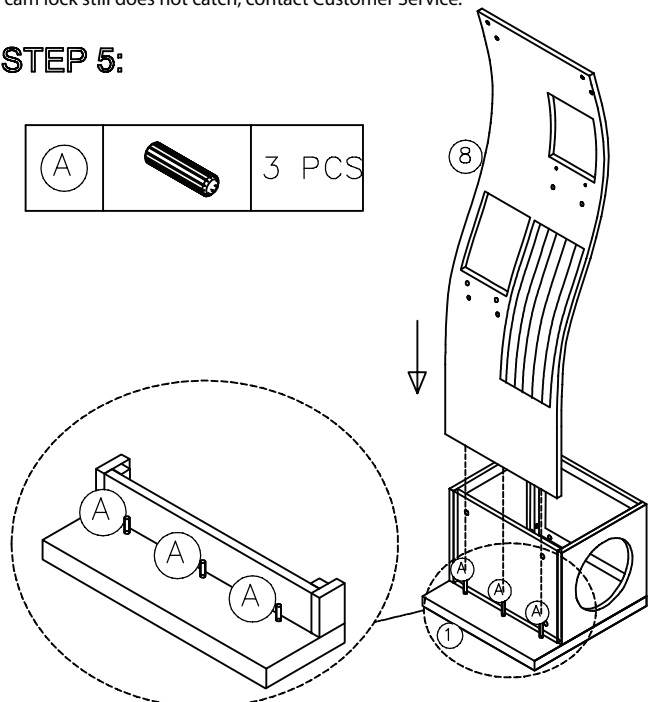
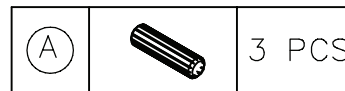


Insert hardware into all 4 walls

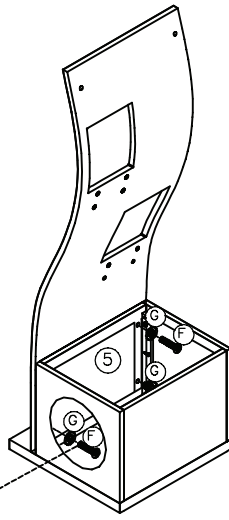
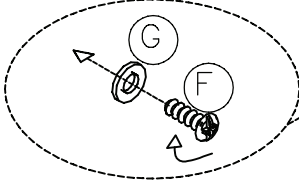
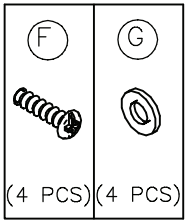


Part 4 cam locks should turn easily. Do not force!
If cam lock does not catch screw head correctly,
turn screw counter clockwise slightly so screw is higher.
If cam lock still does not catch, contact Customer Service.

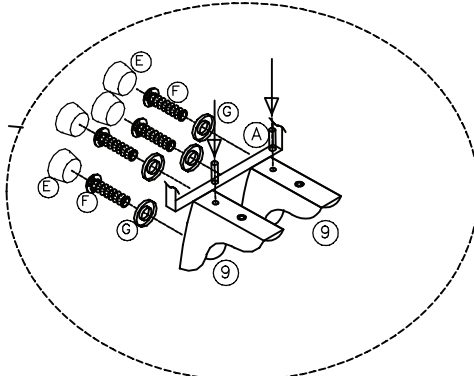
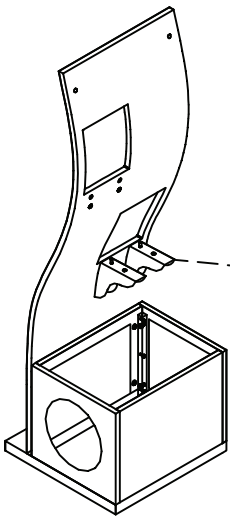
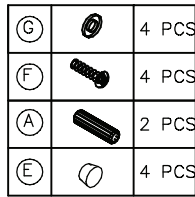
STEP 5:



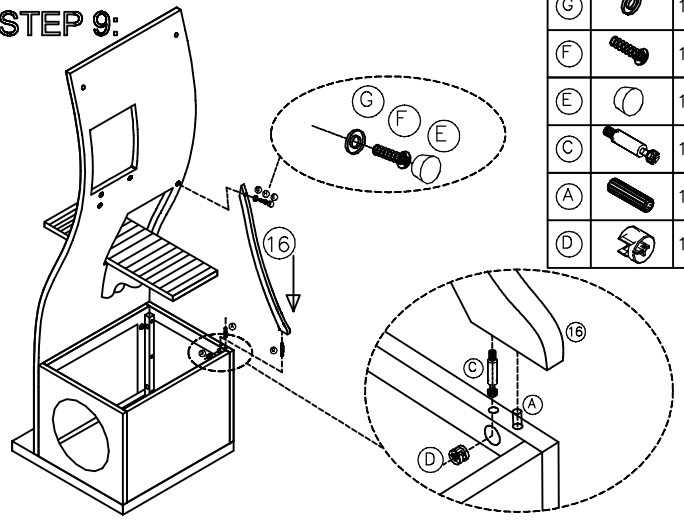
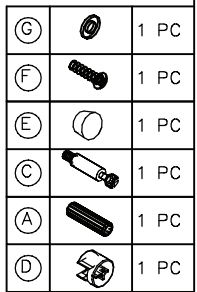
STEP 6:



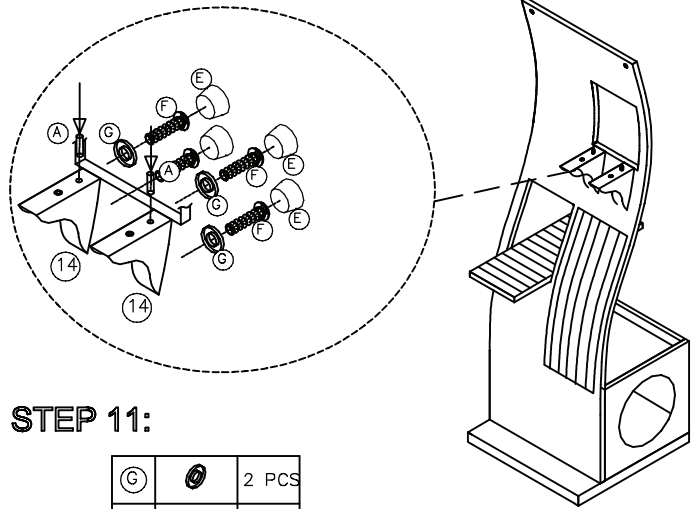
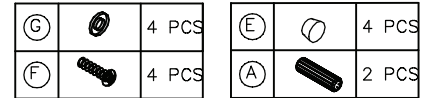
STEP 7:



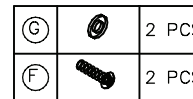
STEP 9:



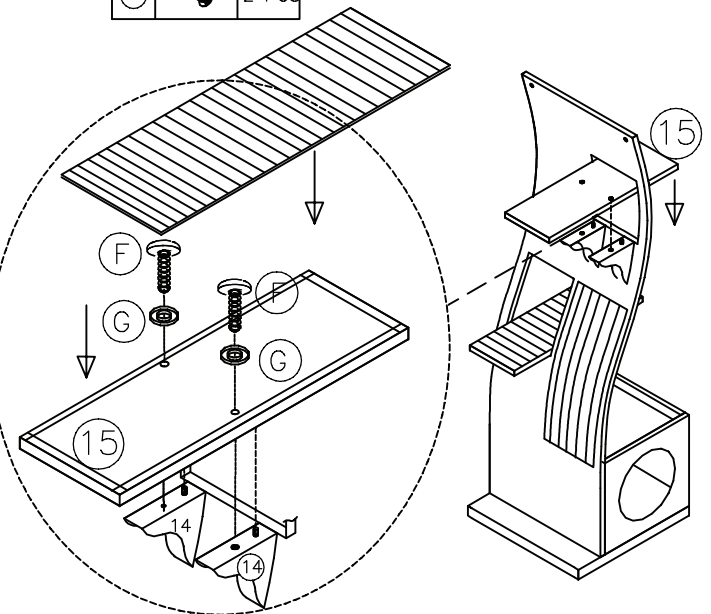
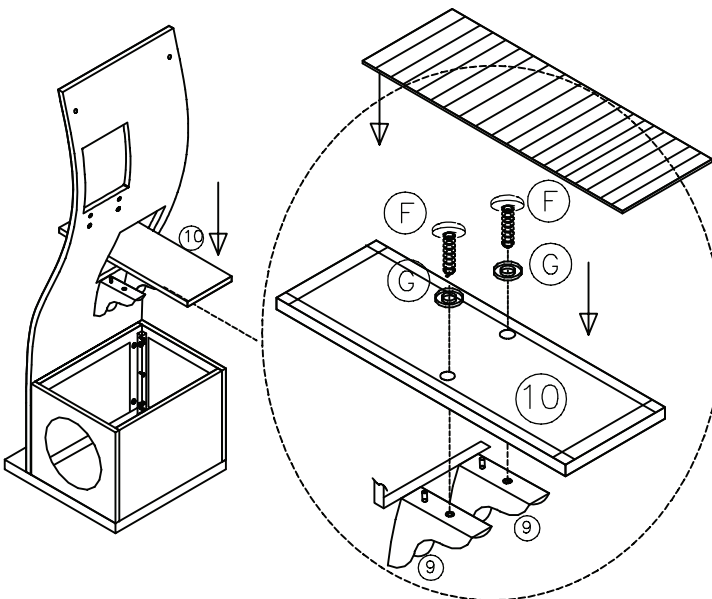
STEP 10:



STEP 11:







STEP 8:

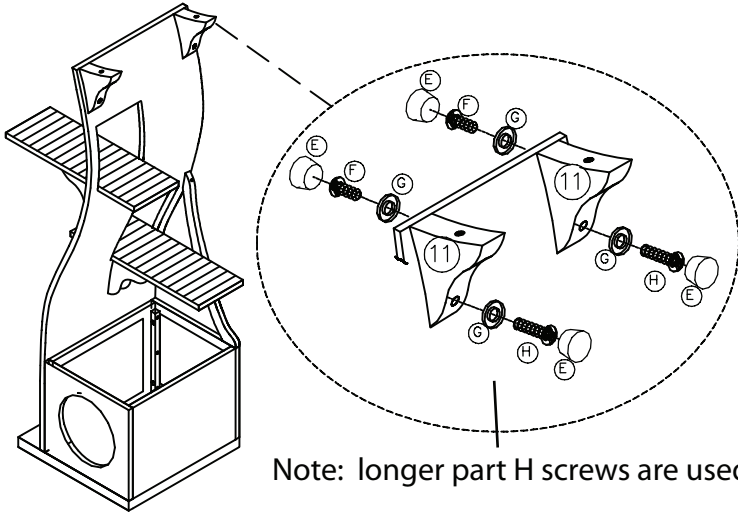


- For proper shelf alignment, first, insert all screws but keep them loose. Align shelf so it's straight and level, then tighten all screws.

- If wood caps are loose, dab a bit of glue on the sides to keep in place.

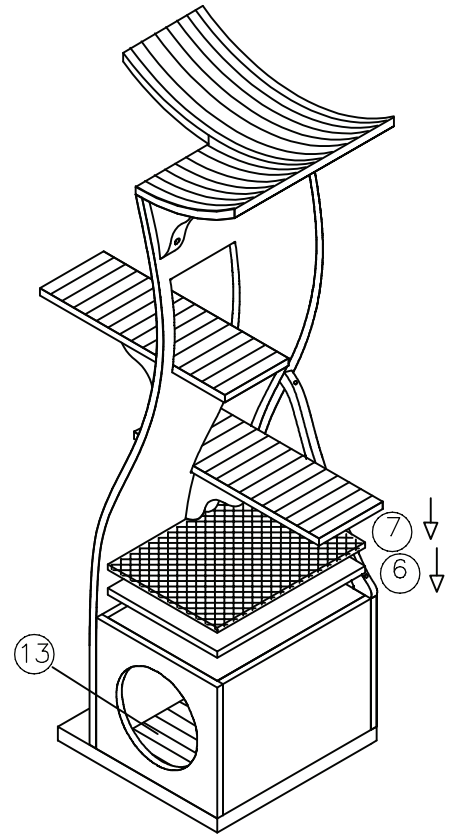
STEP 12:

F		2 PCS	G		4 PCS
H		2 PCS	E		4 PCS


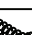


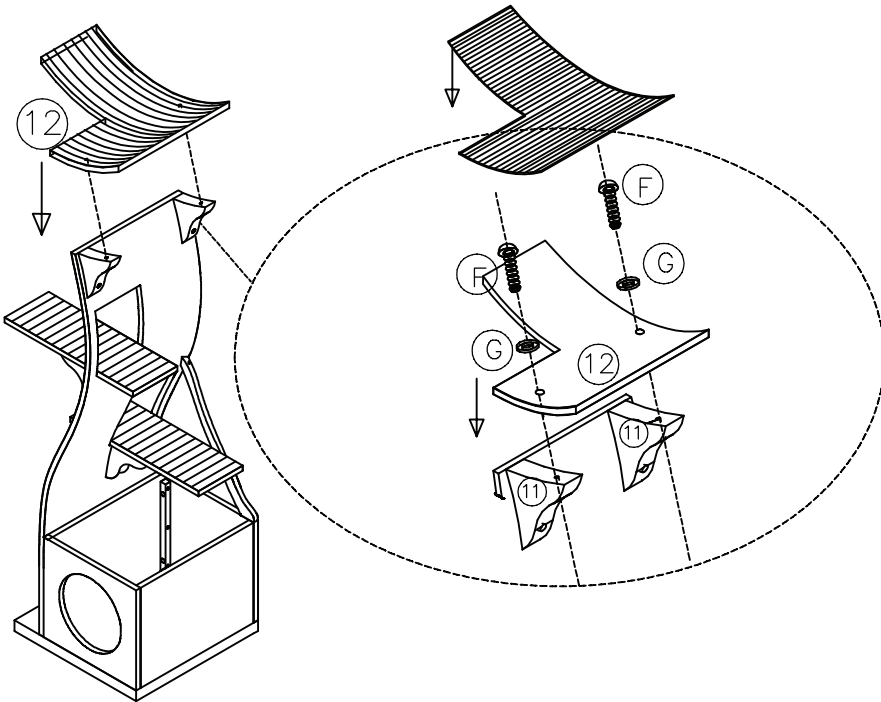
Note: longer part H screws are used

STEP 14:



STEP 13:

G		2 PCS
F		2 PCS



Share a photo of your cat on the Lotus Cat Tower

Find us on Facebook or tag on Instagram
 #LotusCatTower
 @RefinedFeline




Carpets for shelves, cushions, and sisal are replaceable. Visit www.TheRefinedFeline.com to order. Optional shelf cushions are available as well.

DO NOT REMOVE CARPET UNTIL YOU ARE READY TO REPLACE IT.